

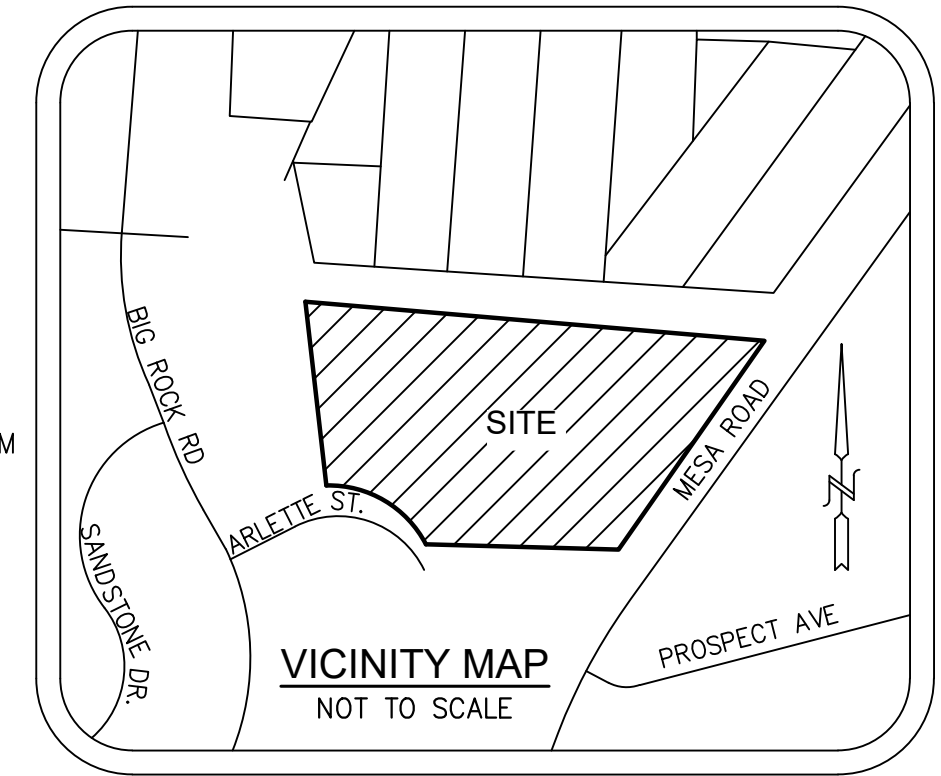
TOPOGRAPHIC SURVEY

SEE SHEET 4



LEGEND AND ABBREVIATIONS

- CL — CENTERLINE
- PL — PROPERTY LINE
- R/W — RIGHT OF WAY
- (426) - CONTOUR
- C&G — CURB & GUTTER
- X — FENCES AS NOTED
- FLS — FLOWLINE/CREEK/STREAM
- WALL AS NOTED
- E — ELECTRIC LINE
- G — GAS LINE
- FS — FIRE SERVICE LINE
- OHU — OVERHEAD ELECTRIC
- S — SEWER LINE
- SD — STORMDRAIN LINE
- T — TELEPHONE LINE
- W — WATER LINE
- AC — ASPHALTIC CONCRETE
- AD — AREA DRAIN
- BFP — BACK FLOW PREVENTER
- CONC — CONCRETE
- DEP — DEPRESSION
- DF — DOOR
- DF — DRINKING FOUNTAIN
- ELB — ELECTRICAL BOX
- EHH — ELECTRIC HAND HOLE
- FF — FINISH FLOOR
- FG — FINISHED GRADE
- FS — FINISHED SURFACE
- FR — FIRE RISER
- FH — FIRE HYDRANT
- FL — FLOW LINE
- GB — GAS BOX
- GV — GAS VALVE
- GL — GROUND LIGHT
- GP — GUARD POST
- GW — GUY WIRE
- HH — HAND HOLE
- HB — HOSE BIB
- IE — INVERT ELEVATION
- IRB — IRRIGATION BOX
- IRV — IRRIGATION VALVE
- LA — LANDSCAPE
- MANHOLE (TELE, STORM, SEWER)
- METER (GAS/ELECTRIC/WATER)
- OBS — OBSTRUCTION
- OHU — OVERHEAD UTILITY
- PP — POWER POLE
- RD — ROOF DRAIN
- SIGN
- SCO — SEWER CLEAN OUT
- SL — STREET LIGHT
- TR — TELEPHONE RISER
- XFM — TRANSFORMER
- TC — TOP OF CURB
- TE — TRASH ENCLOSURE
- (TYP) — TYPICAL
- VEGETATION (TREE/PALM)
- WB — WATER BOX
- WV — WATER VALVE
- YL — YARD LIGHT



BASIS OF BEARINGS

THE BASIS OF BEARINGS FOR THIS SURVEY IS A LINE BETWEEN POINT #1006 AND POINT #1005 AS SHOWN ON RECORD OF SURVEY 11252.

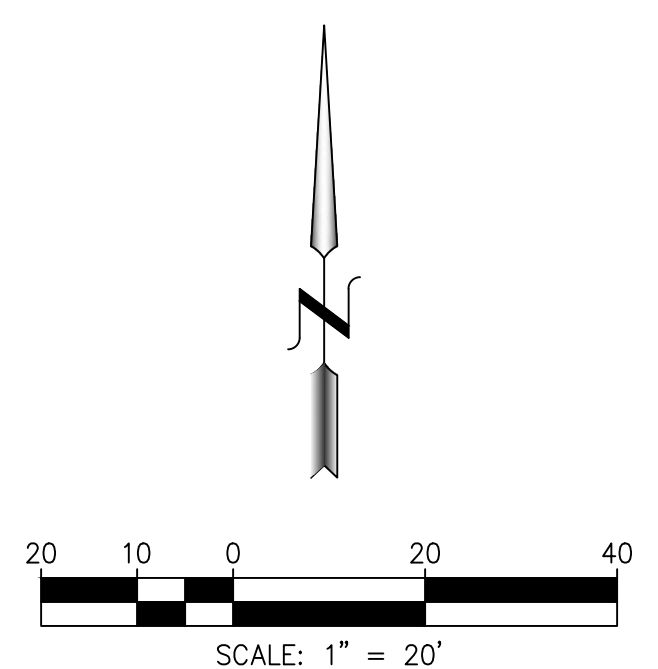
BEING: N17°50'14"W

BENCHMARK

POINT #2044 AS SHOWN ON RECORD OF SURVEY 11252.
STANDARD STREET SURVEY MONUMENT STAMPED RCE 23909 PER MAP 9902. CENTERLINE OF SETTLE ROAD 5' SOUTHWESTERLY OF THE CENTERLINE OF GANLEY ROAD.
ELEVATION: 464.51' (M.S.L.D.)

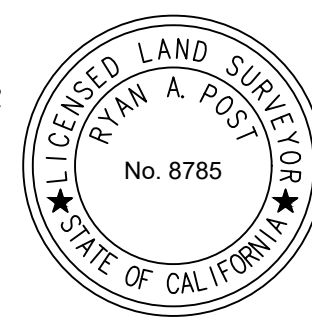
NOTES

TOPOGRAPHY FOR THIS SURVEY IS BASED ON AERIAL SURVEY DONE BY INLAND AERIAL SURVEY ON MARCH 22, 2019 & SUPPLEMENTED WITH CONDITIONAL TOPOGRAPHY DONE BY ATC DESIGN GROUP ON MAY 28, 2019.



THIS SURVEY WAS PREPARED BY ME OR UNDER MY DIRECTION ON MAY, 2019.

[Signature]
RYAN A. POST, LS 8785
DATE: JUNE 13, 2019



NO.	REVISIONS	DESCRIPTION	DATE	APP'D

DATE: 06.13.2019	SCALE: 1" = 20'
DRAWN: A POST	CHECKED: R. POST

SHEET TITLE: TOPOGRAPHIC SURVEY	PROJECT: CHET HARRIOT ELEMENTARY SCHOOL
8120 ARLETTE ST.	SANTEE, CA 92071

DATE: 01/30/2019 - FILE NAME: P119-3916 Chet F. Harriot Elementary - 8120 Arlette St. Santee, CA\Survey\Topo\19-3916 C-15.dwg

TOPOGRAPHIC SURVEY

SEE SHEET 3



REVISIONS		DATE	APP'D
NO.	DESCRIPTION		

ATC DESIGN GROUP ARCHITECTS • ENGINEERS • SURVEYORS 1282 PACIFIC OAKS PL., SUITE C ESCONDIDO, CA 92029 PHONE: (760) 738-8800 FAX: (760) 738-8232	
DATE: 06.13.2019 SCALE: 1" = 20' DRAWN: A POST CHECKED: R. POST	SHEET TITLE TOPOGRAPHIC SURVEY PROJECT CHET HARRIOT ELEMENTARY SCHOOL 8120 ARLETE ST. SANTEE, CA 92071
SHEET 2 OF 4 SHEETS	DATE: 01/30/2019 - FILE NAME: P119-3916 Chet F. Harriot Elementary - 8120 Arlete St. Santee, CA\Survey\Topo\19-3916 G-TS.dwg

